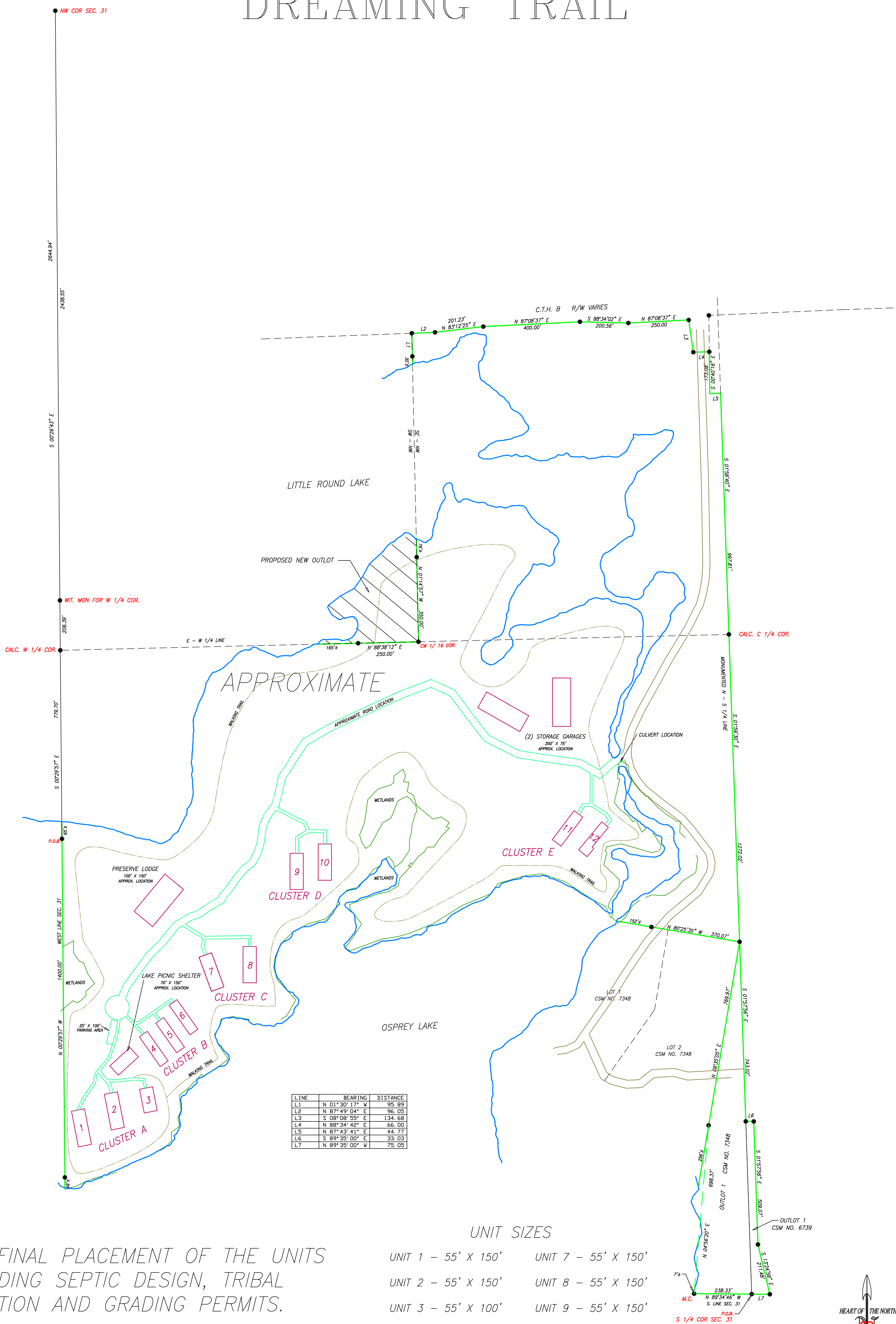


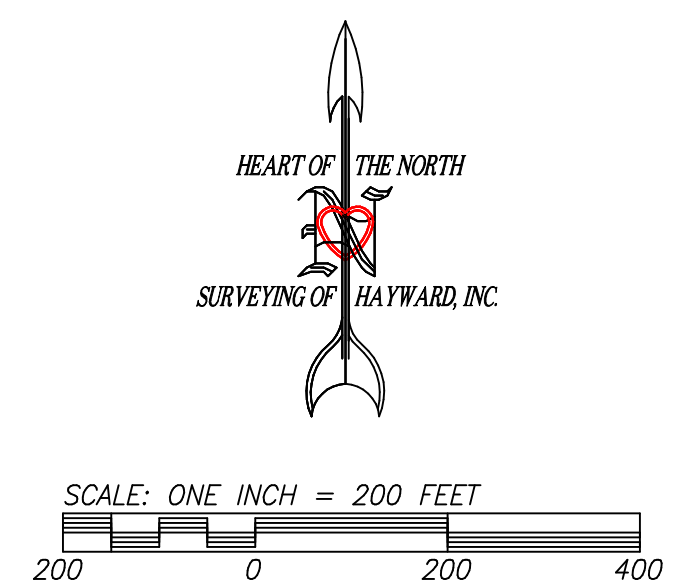
# PRELIMINARY DREAMING TRAIL



NOTE: FINAL PLACEMENT OF THE UNITS IS PENDING SEPTIC DESIGN, TRIBAL INSPECTION AND GRADING PERMITS.

WETLANDS AND ORDINARY HIGH WATER LINE WERE DELINEATED BY NORTHERN ENVIRONMENTAL, INC. ROAD, DRIVEWAY AND WALKING TRAIL LOCATIONS ARE APPROXIMATE.

- UNIT SIZES
- UNIT 1 - 55' X 150'
  - UNIT 2 - 55' X 150'
  - UNIT 3 - 55' X 100'
  - UNIT 4 - 40' X 150'
  - UNIT 5 - 40' X 150'
  - UNIT 6 - 40' X 150'
  - UNIT 7 - 55' X 150'
  - UNIT 8 - 55' X 150'
  - UNIT 9 - 55' X 150'
  - UNIT 10 - 55' X 150'
  - UNIT 11 - 45' X 150'
  - UNIT 12 - 45' X 150'



LEGEND

CLIENT: HAYWARD T2

JOB: H08/003  
SCALE: 1" = 200'  
DRAFTED BY: JRN

FILE: T41NR7W/SEC31  
ACAD: DREAMING\_TRAIL  
PAC: COORDS/FIX/FIX.PRJ  
NB. S-183/PG.  
SHEET 1 OF 1

**HEART OF THE NORTH  
SURVEYING OF HAYWARD, INC.**

10339 N. DUFFY ROAD  
HAYWARD, WISCONSIN 54843  
E-MAIL: INFO@HONSURVEYING.COM

PH: 715/634-2442  
FAX: 715/634-6444

©